



# MONTHLY MEMBERSHIP PROGRESS REPORT

District 410 B

Results as of: 10/31/2018

GMT: RASHMI KOOVERJEE

LOCATION REP OF SOUTH AFRICA

GMT CA

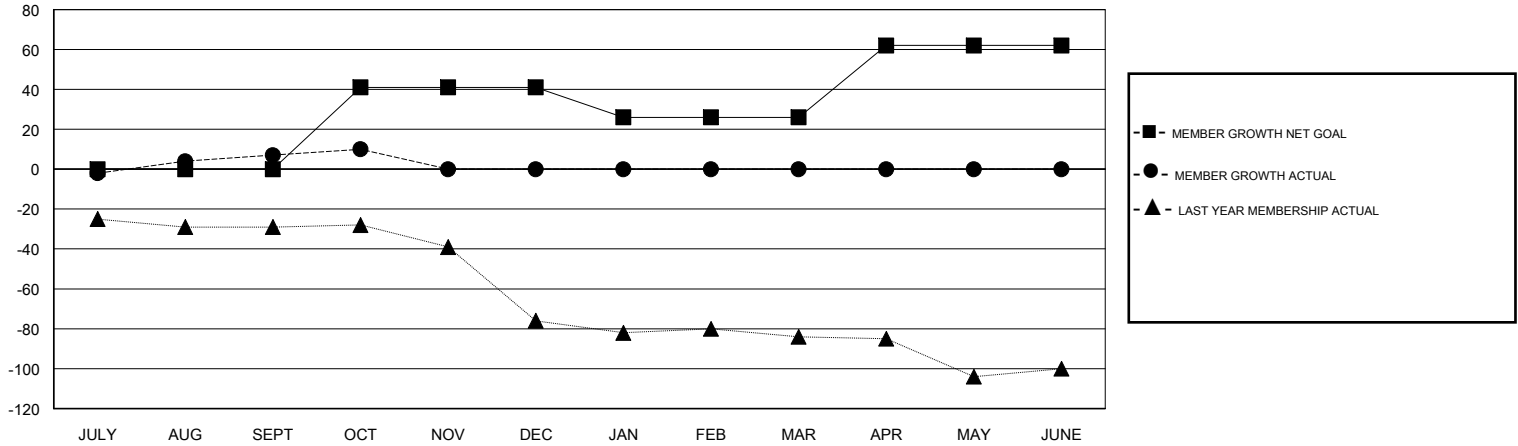
Clubs			
RESULTS FOR 2018-2019			
QUARTER	NEW CLUB GOAL	NEW CLUBS	DROPPED CLUBS
JULY/AUG/SEPT	0	0	0
OCT/NOV/DEC	1	0	0
JAN/FEB/MAR	0	0	0
APR/MAY/JUNE	1	0	0

Members			
RESULTS FOR 2018-2019			
QUARTER	MEMBER GROWTH NET GOAL	MEMBER GROWTH ACTUAL	DROPPED MEMBERS ACTUAL (including transfers)
JULY/AUG/SEPT	0	19	11
OCT/NOV/DEC	41	12	7
JAN/FEB/MAR	-15	0	0
APR/MAY/JUNE	36	0	0

GOALS AND ACTUAL NEW CLUBS CUMULATIVE



GOALS AND ACTUAL MEMBERS CUMULATIVE



DROPPED CLUBS: 0	9 CLUBS OF 37 ADDED 1 OR MORE NEW MEMBERS	<u>GENDER DISTRIBUTION</u>
DROPPED MEMBERS	<a href="#">CLICK HERE FOR CUMULATIVE MEMBERSHIP DATA</a>	MALE 342 (52.37%)
DECEASED 3		FEMALE 311 (47.63%)
CLUB CANCELLED 0		Women Percentage Fiscal Year Goal: 48%
OTHER 15		TOTAL FAMILY UNIT MEMBERS 190
TOTAL 18		FAMILY MEMBERS PAYING HALF DUES 97